

FEATURES

- ▶ Easy access oil drain line C/W ball valve
- ▶ Dual fuel scrubber
- ▶ Gas inlet valve C/W lockable handle
- ▶ Easy access cover for coolant top up
- ▶ 12V alternator & belt guard
- ▶ Murphy Oil Level Sight Glass C/W shut down controller
- ▶ Battery disconnect C/W safety lockout & Voltage Indicator

125KW GENERATOR

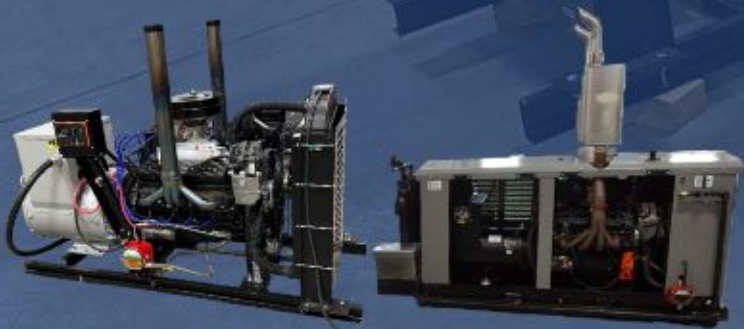
- 125kW Generator package is powered by the dependent Origin 10.3L industrial engine
- One of the industries largest spark-ignited big block engines on the market, the ability to generate 200HP of power when ever needed.
- Compared to any engine in its class it has one of the greatest Horse-Power per Dollar
- Ability to run on both Natural Gas & Propane, Insuring this unit will operate wherever required.
- Magna-Plus Generator by Marathon Electric, one of most trusted names in the E. industry

CONTROL PANEL

- Oil Pressure
- Engine Temperature
- Fuel & Oil Level
- Hour Meter
- RPM
- Real Time Clock W/ Time/Date
- 3 Phase AC Volts, Amps & Hz (generators)

OPTIONS

- 24VDC Brushless Alternator
- Extended Life Oil Reservoirs
- Hospital Grade Muffler (noise suppression)
- Open or Enclosed Units



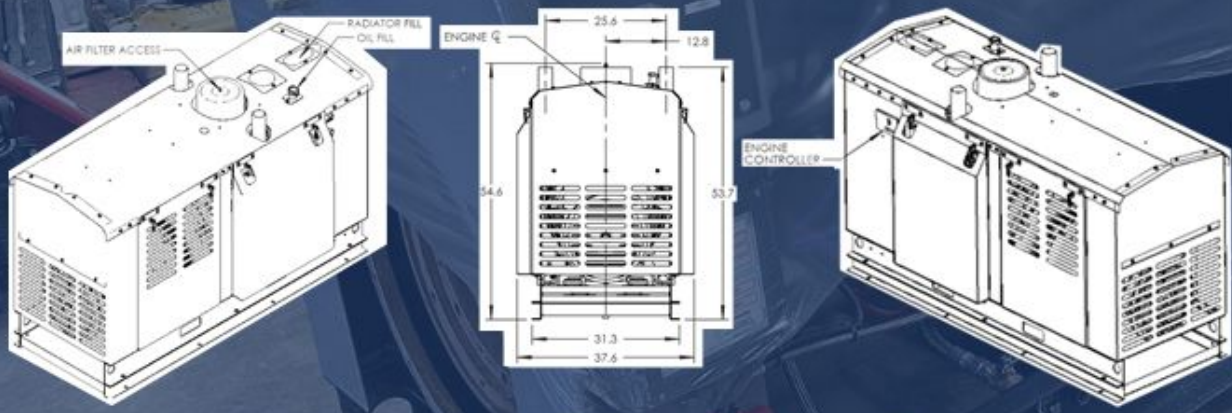
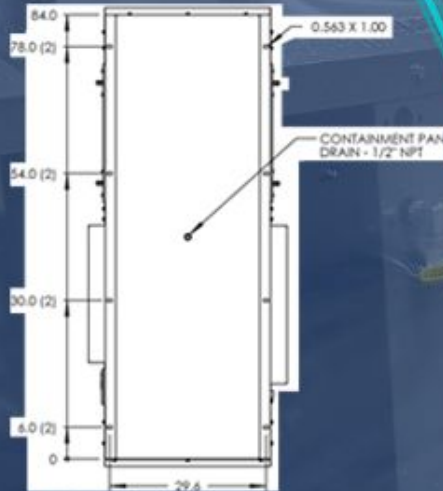
creamco.ca



Websales@creamco.ca



RPM	TQ (NM)	cTQ (NM)	cTQ (ft-lbs)	cHP	Fuel Flow (kg/hr)	Obs BSFC (lb/hp/hr)	Obs BSFC (BTU/hp/hr)
2800	644.4	705.0	519.2	276.8	40.5	0.352	7,214
2300	672.8	728.0	536.2	234.8	33.8	0.343	7,025
1800	672.5	725.0	533.9	183.0	26.6	0.345	7,056
2800	486.2	528.5	389.3	207.5	32.2	0.371	7,592
2300	505.3	544.2	400.8	175.5	26.7	0.361	7,384
1800	506.4	543.4	400.2	137.2	21.0	0.361	7,388
2800	321.4	348.4	256.6	136.8	23.7	0.414	8,478
2300	342.3	367.6	270.8	118.6	20.0	0.399	8,171
1800	375.7	403.1	296.9	101.8	16.8	0.390	7,994
2800	162.4	175.9	129.5	69.1	15.6	0.540	11,057
2300	166.1	177.7	130.9	57.3	12.7	0.522	10,680
1800	169.7	182.3	134.2	46.0	9.8	0.505	10,350





NEW
Enclosed & Insulated

